



Focusing on Supports to Families: Specific Strategies for Including Family Support in UCEDD CORE Grants

**AUCD
Family Support Special
Interest Group (SIG)**

January 20, 2022

Hello!



Mark Smith, FS
SIG Co-Chair
Nebraska



Dana Yarbrough,
FS SIG Co-Chair
Virginia



Sheli Reynolds,
Today's facilitator
Missouri

Agenda



- **Welcome and Overview of Family Support SIG** (*dana and mark*)
- **Setting the Stage: Family, Family Support and Family Engagement** (*sheli*)
- **Considerations in the Core Grant** (*All*)
- **Partnering with Family Organizations** (*All*)
- **Closing** (*dana and mark*)

Family Support SIG

The purpose of the AUCD Family Support SIG is to engage the AUCD network, including UCEDD, LEND and IDDRC members, in:

- playing key roles in moving family support and leadership forward at the national and state level
- advancing leadership in supporting families as part of the core work and values within the AUCD network

<https://www.aucd.org/template/page.cfm?id=864>



AUCD Family Support Special Interest Group (2008 to date)

AUCD Family Support Special Interest Group

Formed in 2008 to bring UCEDD members together to promote forward movement in all areas of family support.

Family Support Summit @ Wingspread

Leaders from across the U.S. met in 2011 to develop a national agenda for family support.

National Sibling Leadership Network

Recognition of the importance of support provided by siblings.

LEND Family Discipline Network

Collaboration with the LEND SIG on issues important to families.

Family Support Projects of National Significance

Since 1999, UCEDDs have operated AIDD funded PNS' on Family Support.

National Family Support Community of Practice

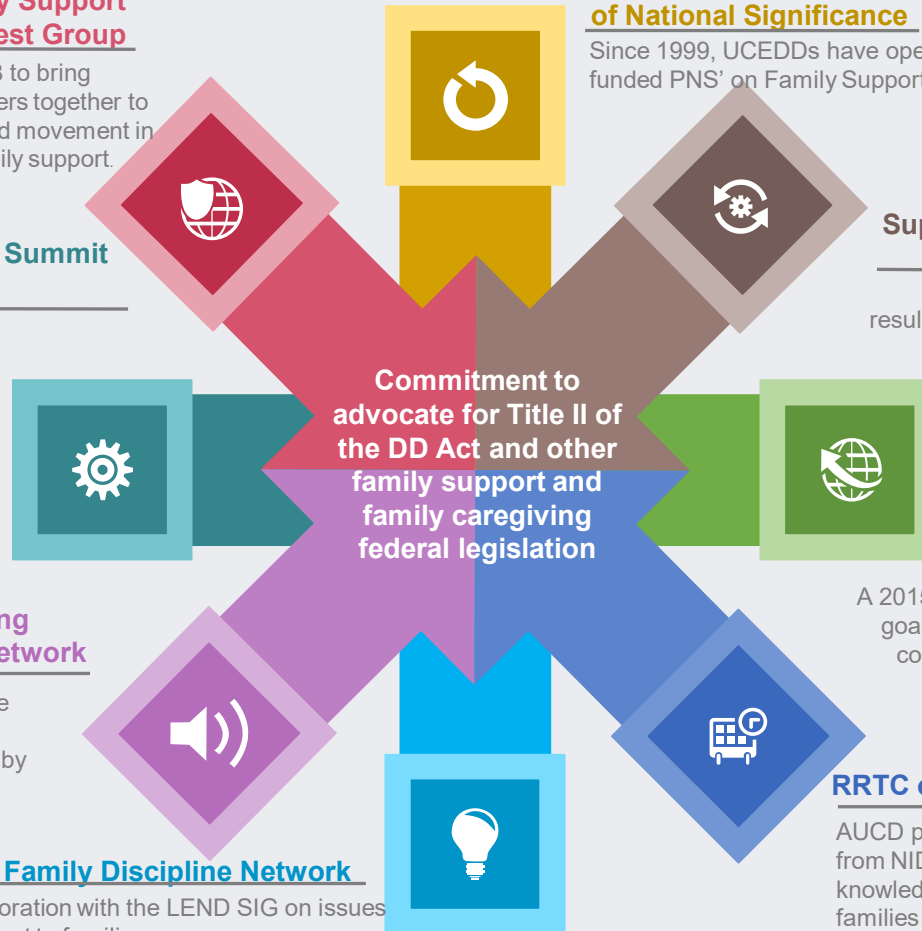
An ongoing initiative resulting from Wingspread report.

National Goals on Family Support

A 2015 conference to develop goals for supporting today's complex family structures.

RRTC on Family Support

AUCD partners in 2014 funding from NIDILRR to generate knowledge about the needs of families across the lifespan.



Using Jamboard



https://jamboard.google.com/d/1gph05_GaXdKjSoFo08QTQV4msUGMBoKmUht8734WGU/edit?usp=sharing



Setting the Stage

Focusing on Family, Family Support and
Family Engagement

Setting the Stage | Focusing on Complexity of “Family”

Values, thinking and actions that recognizes the person within the context of their family unit and/or family culture	Person Centered Thinking Family Centered Thinking
Family unit or members need services and supports to achieve a good life for the person with a disability and other family members (Family Supports)	Family Support Program Family Support Services Family Support Practices
Family specific roles in organizations and programs based on lived experience (Family Positions)	Family Navigators Family Peer Mentors Family Trainers Family Leaders
Engaging families in organizational and policy change (Family Engagement)	Family Advisory Councils Family Feedback Surveys
Professionals who are family members	Researchers Trainers Faculty



Including All Families

- *Family Structure (household structure, divorce, intergenerational, membership)*
- *Family Member types (parents, spouse, children, siblings, extended families, grand parents, Parenting with a Disability)*
- *Culture, Diversity, Beliefs, Language*
- *Geographic location (rural, urban, suburban)*
- *Socio-economic Status*
- *Different life stages and/or generations*
- *Receiving Services, not receiving services*



Discussion Topics | Families and the CORE Grant

- Role in development of Core Grant
- Informing the Priorities and Outcomes of the Core Grant
- Key roles for “Family” as staff, advisors, trainers, etc.
- Family Support as a Priority Area
- Core Function: Research and Evaluation
- Core Function: Information Dissemination
- Core Function: Community Based Services and Supports
- Core Function: University Based Education and Training



Closing

Join the Family Support SIG -

<https://www.aucd.org/template/page.cfm?id=864>



Mark Smith
msmitha@unmc.edu

Dana Yarbrough
dvyarbrough@vcu.edu